

LOW-ETM HOUSE WRAP

THERMAL WEATHER RESISTANT BARRIER



H
O
U
S
E
W
R
A
P

Housewrap Insulation

A 21st Century Housewrap for 21st Century Builders

- ✓ ICC Approved Stand Alone Housewrap
- ✓ Used by Top Builders and Remodelers Nationwide
- ✓ Adds an Additional R-4 to Wall System Behind Hollow Back Vinyl Siding
- ✓ Increases Energy Savings
- ✓ Improves Insulation System Performance
- ✓ Insulation & Housewrap Combined



ES
P
LOW-E

REFLECTIVE INSULATION
INSULATION SOLUTIONS FOR OVER 25 YEARS



ICC EVALUATION
SERVICE

ICC-ES Evaluation Report
ESR-3652

ICC, CBC, CRC, FRC Evaluated Alternative Stand Alone Underlayment
Most Widely Accepted and Trusted

LOW-E™ HOUSEWRAP

FEATURES AND SPECIFICATIONS

PRODUCT DESCRIPTION:

In a space thinner than a pancake, you can dramatically improve a home's energy efficiency. Using the same reflective technology that protects NASA astronauts from the sun's searing heat, Low-E™ Housewrap blocks 97% of radiant heat transfer through your walls. Low-E™ Housewrap combines the benefits of a weather-resistant barrier with superior thermal performance. It is light, safe and easy to cut with a utility knife. It can be fastened with staples or cap nails like an ordinary house wrap and stands up to rough handling. For full installation instructions, please refer to the Housewrap Install Guide at www.low-e.com.

Low-E™ Housewrap Insulation:

PRODUCT CODES: 4PFNS, 5PFNS, 6PFNS

PRODUCT DIMENSIONS & DESCRIPTION:

Single-sided scrimmed aluminum foil laminated to polyethylene foam perforated (1/4" nominal thickness)

WIDTH: 4', 5', 6', with overlapping foil flange

LENGTH: 125', 100', 100'

R-VALUE (CORE RESISTANCE): R-1.03

SYSTEM R-VALUE: R-4*

R-VALUE: R-3 (product & reflective airspace only)

PERM RATING: ASTM E-96 - 7 or 40 grams/(day-m²)

WATER RESISTANCE: ASTM D779 - 9hrs

FLAME AND SMOKE: ASTM E-84

FLAME SPREAD: Less than 25,

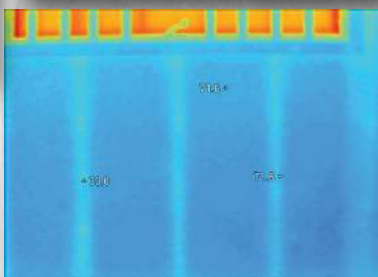
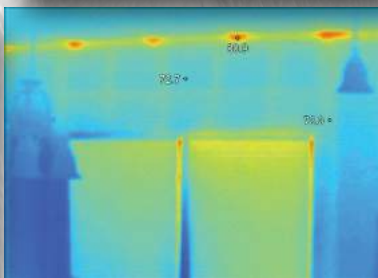
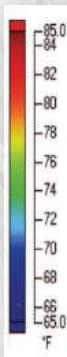
SMOKE DEVELOPED: Less than 50

FULL SCALE FIRE TEST (walls only): NFPA-286 Passed

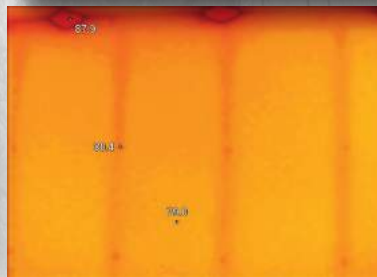
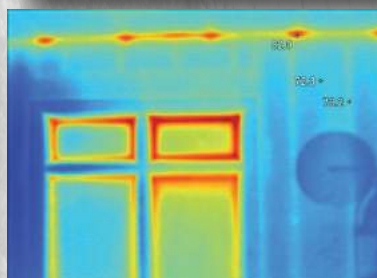
*Horizontal heat flow: vinyl siding with 0.375 inch reflective airspace, Low-E™ Housewrap attached to nominal thickness 1/2 inch wood sheathing. Report from Geo Science available upon request. Specific R-Values for specific applications can be obtained from install guide at www.low-e.com or by contacting ESP, Inc.



House protected by Low-E™ Reflective Insulation Housewrap



House with conventional housewrap



Two Illinois homes built only 25 yards apart are virtually identical with one key difference. One was built with Low-E™ Reflective Insulation Housewrap, the other with traditional housewrap.

On an 85° summer day the north facing interior walls of both homes were photographed from inside with a heat measuring infrared camera. The images showed that very little summer heat penetrated either of the properly insulated walls.

The walls on the south side, where the sun shone directly on the house walls, told a different story. The wall protected by Low-E™ all but stopped radiant heat transfer. The wall with traditional housewrap showed dramatic heat gain absorbing heat and radiating it through the fiberglass insulation.



Scan Code to See Install Guide

Low-E™ Insulation • Low-E™ Housewrap • Low-E™ Slabshield

For more information and a free sample of Low-E™ material, or for the dealer nearest you visit www.low-e.com or call:

ESP CORPORATE
800-289-5693

LOW-E™ UK
0151-494-9994

LOW-E™ GULF SOUTH
985-262-4581

LOW-E™ MIDWEST
800-769-8818

LOW-E™ NORTHEAST
800-560-5693

LOW-E™ MID SOUTH
800-560-5693

LOW-E™ SOUTHWEST
877-565-5693