



# Post Frame: Thermal Insulation

The High Quality, Long Lasting Post Frame Insulation Solution

- ✓ Increases Energy Savings & Reflects up to 97% of Radiant Heat
- ✓ Pure Aluminum & White Foil Facings (Not Metalized Polyester) WILL NOT Degrade Over Time
- ✓ Polyethylene Foam Core Self Seals Around Fasteners
- ✓ Indoor Air Quality Rated. No Glues, Non-Toxic, No Fiberglass, No Itching
- ✓ Excellent Vapor Barrier. Also Available Perforated for High Performance Hybrid Insulation Systems
- ✓ Bird, Insect, Mold & Mildew Resistant



# LOW-E™ POST FRAME

## FEATURES AND SPECIFICATIONS

### PRODUCT DESCRIPTION:

Low-E™ Post Frame Insulation products are the high quality, long lasting solutions for your post frame insulation needs. Low-E™ Post Frame can be installed in your roofing and/or wall system as stand-alone or in combination with other insulating materials. With its superior thermal qualities, Low-E™ Post Frame Insulation will provide comfort and improve any post frame building insulation system performance to help save money on heating and cooling costs. The pure aluminum foil or white aluminum foil facings will not degrade or flake over time with exposure to UV light. The numerous attachment features allow for multiple ways to install without losing insulation coverage. To learn more about high quality Low-E™ Post Frame products that are built to last in your buildings please visit: [www.low-e.com](http://www.low-e.com) or call 1-800-289-5693. Low-E™ has the products to make your building as energy efficient as possible while promoting a healthier indoor environment.

#### Low-E™ Post Frame Insulation:

PRODUCT CODES: 4LMLT, 4LMWS, 4EMWS, 4LMWS

#### PRODUCT DIMENSIONS & DESCRIPTIONS:

Double sided scrimmed, scrimmed foil / white foil, scrimless foil / white foil laminated to polyethylene foam, (1/8" nominal thickness)

WIDTH: 4' LENGTH: 125'

CORE MATERIAL: Polyethylene Foam

EDGINGS AVAILABLE: Trimmed, Staple-Flange

FACINGS AVAILABLE: Foil/White Foil

FLAME AND SMOKE: ASTM E-84

FLAME SPREAD: Less than 25

SMOKE DEVELOPED: Less than 50

FULL SCALE FIRE TEST: NFPA 286 - Passed

R-VALUE: Up to R-10\*

PERM RATING: ASTM E-96 0.008

#### Low-E™ Insulation:

PRODUCT CODES: 4LFLT, 4LFLS, 4LFLZ, 5LFLT, 6LFLT, 6LFLS, 6LFLZ

#### PRODUCT DIMENSIONS & DESCRIPTIONS:

Double sided scrimmed aluminum foil laminated to polyethylene foam (1/4" nominal thickness)

WIDTH: 4', 5', 6' LENGTH: 125', 100', 84'

CORE MATERIAL: Polyethylene Foam

EDGINGS AVAILABLE: Trimmed, Staple-Flange,

EZ-Seal

FLAME AND SMOKE: ASTM E-84

FLAME SPREAD: Less than 25,

SMOKE DEVELOPED: Less than 50

FULL SCALE FIRE TEST: NFPA 286 - Passed

R-VALUE: Up to R-11\*

PERM RATING: E-96 - .008

#### Low-E™ Class A White Insulation:

PRODUCT CODES: 4EFWT, 6EFWT, 4EFWS, 6EFWS, 4EFWZ, 6EFWZ

#### PRODUCT DIMENSIONS & DESCRIPTIONS:

Scrimless Foil/White Foil laminated to polyethylene foam (1/4" nominal thickness)

WIDTH: 4', 6' LENGTH: 125', 84'

CORE MATERIAL: Polyethylene Foam

EDGINGS AVAILABLE: Trimmed, Staple-Flange,

EZ-Seal

FLAME AND SMOKE: ASTM E-84

FLAME SPREAD: Less than 25,

SMOKE DEVELOPED: Less than 50

FULL SCALE FIRE TEST: NFPA 286 - Passed

R-VALUE: Up to R-11\*

PERM RATING: E-96 - .008

\* R-values vary depending on facing and assembly. R-values for specific applications can be obtained from the Install Guide at [low-e.com](http://low-e.com) or by contacting us at 1-800-289-5693. Low-E™ strives to provide the most accurate R-Value data possible. The R-values set forth in this document are the reflection of a combination of industry standard testing and conscientious calculation. However, these numbers, even within specific applications, can fluctuate due to the multiple variables that influence R-value.



### Edgings Available: True 4' and 6' Coverage Means No Overlap Necessary



EZ-Seal



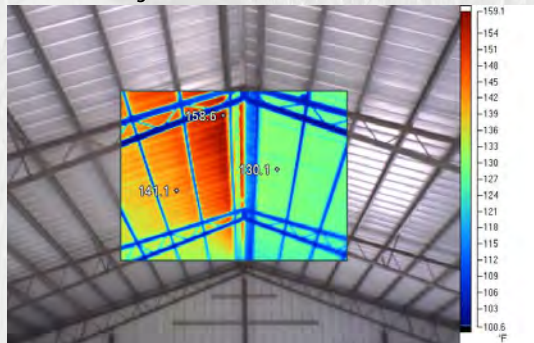
Trimmed



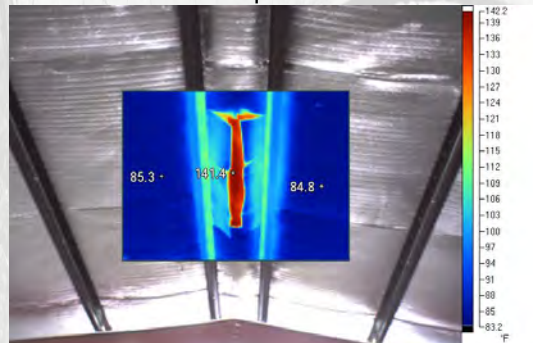
Staple Flange



Thermal imaging picture of the roof line of a building without Low-E™ insulation.



Thermal imaging picture of a roof line with Low-E™ Insulation. Note: The Low-E™ Insulation has been cut and pulled open in the center to better show the temperature differential.



Both photos taken in the afternoon of an 88 degree day.

### Low-E™ Insulation • Low-E™ Housewrap • Low-E™ Slabshield

For more information and a free sample of Low-E™ material, or for the dealer nearest you visit [www.low-e.com](http://www.low-e.com) or call:

ESP CORPORATE  
800-289-5693

LOW-E™ UK  
0151-494-9994

LOW-E™ GULF SOUTH  
985-853-1322

LOW-E™ MIDWEST  
800-769-8818

LOW-E™ NORTHEAST  
800-560-5693

LOW-E™ MID SOUTH  
800-560-5693

LOW-E™ SOUTHWEST  
877-565-5693