

LOW-E METAL BUILDING

THERMAL INSULATION



Metal Building: Thermal Insulation

The High Quality, Long Lasting Metal Building Insulation Solution

- ✓ Increases Energy Savings & Reflects up to 97% of Radiant Heat
- ✓ Pure Aluminum & White Foil Facings (Not Metalized Polyester) WILL NOT Degrade Over Time
- ✓ Polyethylene Foam Core Self Seals Around Fasteners
- ✓ Indoor Air Quality Rated. No Glues, Non-Toxic, No Fiberglass, No Itching
- ✓ Excellent Vapor Barrier. Also Available Perforated for High Performance Hybrid Insulation Systems
- ✓ Bird, Insect, Mold & Mildew Resistant



ESP **LOW-E**

REFLECTIVE INSULATION
INSULATION SOLUTIONS FOR OVER 25 YEARS



M
E
T
A
L

B
U
I
L
D
I
N
G

LOW-E™ METAL BUILDING

FEATURES AND SPECIFICATIONS

PRODUCT DESCRIPTION:

Low-E™ Metal Building Insulation products are the high quality, long lasting solutions for your Metal Building insulation needs. Low-E™ Metal Building Insulation can be installed in your roof and/or wall system as stand-alone or in combination with other insulating materials. With its superior thermal qualities, Low-E™ Metal Building Insulation will provide comfort and improve any metal building insulation system performance to help save money on heating and cooling costs. The pure aluminum foil or white aluminum foil facings will not degrade or flake over time with exposure to UV light. The numerous attachment features allow for multiple ways to install without losing insulation coverage. To learn more about high quality Low-E™ Metal Building products that are built to last please visit: www.low-e.com or call 1-800-289-5693. Low-E™ has the products to make your building as energy efficient as possible while promoting a healthier indoor environment.

Low-E™ Metal Building Insulation:

PRODUCT CODES: 4LMLT, 4LMLS, 4EMWS, 4LMWS

PRODUCT DIMENSIONS & DESCRIPTIONS:

Double sided scrimmed, scrimmed foil / white foil, scrimless foil / white foil laminated to polyethylene foam, (1/8" nominal thickness)

WIDTH: 4' LENGTH: 125'

CORE MATERIAL: Polyethylene Foam

EDGINGS AVAILABLE: Trimmed, Staple-Flange

FACINGS AVAILABLE: Foil/White Foil

FLAME AND SMOKE: ASTM E-84

FLAME SPREAD: Less than 25

SMOKE DEVELOPED: Less than 50

FULL SCALE FIRE TEST: NFPA 286 - Passed

R-VALUE: Up to R-10*

PERM RATING: ASTM E-96 0.008

Low-E™ Insulation:

PRODUCT CODES: 4LFLT, 4LFLS, 4LFLZ, 5LFLT, 6LFLT, 6LFLS, 6LFLZ

PRODUCT DIMENSIONS & DESCRIPTIONS:

Double sided scrimmed aluminum foil laminated to polyethylene foam (1/4" nominal thickness)

WIDTH: 4', 5', 6' LENGTH: 125', 100', 84'

CORE MATERIAL: Polyethylene Foam

EDGINGS AVAILABLE: Trimmed, Staple-Flange, EZ-Seal

FLAME AND SMOKE: ASTM E-84

FLAME SPREAD: Less than 25,

SMOKE DEVELOPED: Less than 50

FULL SCALE FIRE TEST: NFPA 286 - Passed

R-VALUE: Up to R-11*

PERM RATING: E-96 - .008

Low-E™ Class A White Insulation:

PRODUCT CODES: 4EFWT, 6EFWT, 4EFWS, 6EFWS, 4EFWZ, 6EFWZ

PRODUCT DIMENSIONS & DESCRIPTIONS:

Scrimless Foil/White Foil laminated to polyethylene foam (1/4" nominal thickness)

WIDTH: 4', 6' LENGTH: 125', 84'

CORE MATERIAL: Polyethylene Foam

EDGINGS AVAILABLE: Trimmed, Staple-Flange, EZ-Seal

FLAME AND SMOKE: ASTM E-84

FLAME SPREAD: Less than 25,

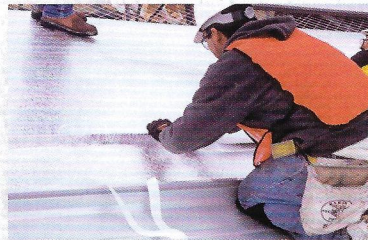
SMOKE DEVELOPED: Less than 50

FULL SCALE FIRE TEST: NFPA 286 - Passed

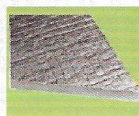
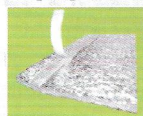
R-VALUE: Up to R-11*

PERM RATING: E-96 - .008

* R-values vary depending on facing and assembly. R-values for specific applications can be obtained from the Install Guide at low-e.com or by contacting us at 1-800-289-5693. Low-E™ strives to provide the most accurate R-Value data possible. The R-values set forth in this document are the reflection of a combination of industry standard testing and conscientious calculation. However, these numbers, even within specific applications, can fluctuate due to the multiple variables that influence R-value.



Edgings Available: True 4' and 6' Coverage Means No Overlap Necessary

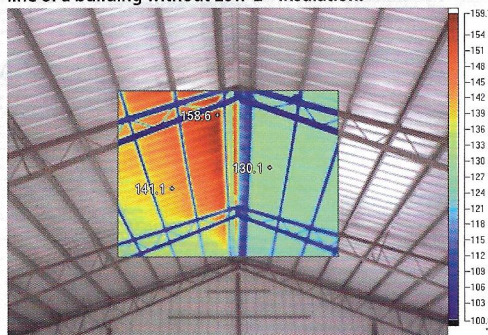


EZ-Seal

Trimmed

Staple Flange

Thermal imaging picture of the roof line of a building without Low-E™ insulation.



Thermal imaging picture of a roof line with Low-E™ Insulation. Note: The Low-E™ Insulation has been cut and pulled open in the center to better show the temperature differential.



Both photos taken in the afternoon of an 88 degree day.

Low-E™ Insulation

Low-E™ Housewrap

Low-E™ Slabshield

For more information and a free sample of Low-E™ material, or for the dealer nearest you visit www.low-e.com or call:

ESP CORPORATE
800-289-5693

LOW-E™ UK
0151-494-9994

LOW-E™ GULF SOUTH
985-853-1322

LOW-E™ MIDWEST
800-769-8818

LOW-E™ NORTHEAST
800-560-5693

LOW-E™ MID SOUTH
800-560-5693

LOW-E™ SOUTHWEST
877-565-5693